



# PDK1 (Phospho Tyr243) rabbit pAb

<b>Catalog No</b>	YP-Ab-02441
<b>Isotype</b>	IgG
<b>Reactivity</b>	Human;Mouse;Rat
<b>Applications</b>	WB;ELISA;IHC
<b>Gene Name</b>	PDK1 PDHK1
<b>Protein Name</b>	PDHK1 (Phospho Tyr243)
<b>Immunogen</b>	Synthesized peptide derived from human PDHK1 (Phospho Tyr243)
<b>Specificity</b>	This antibody detects endogenous levels of Human,Mouse,Rat PDHK1 (Phospho Tyr243)
<b>Formulation</b>	Liquid in PBS containing 50% glycerol, 0.5% BSA and 0.02% sodium azide.
<b>Source</b>	Polyclonal, Rabbit,IgG
<b>Purification</b>	The antibody was affinity-purified from rabbit serum by affinity-chromatography using specific immunogen.
<b>Dilution</b>	WB 1:500-2000;IHC-p 1:50-300; ELISA 2000-20000
<b>Concentration</b>	1 mg/ml
<b>Purity</b>	≥90%
<b>Storage Stability</b>	-20°C/1 year
<b>Synonyms</b>	[Pyruvate dehydrogenase [lipoamide]] kinase isozyme 1, mitochondrial (EC 2.7.11.2;Pyruvate dehydrogenase kinase isoform 1)
<b>Observed Band</b>	50kD
<b>Cell Pathway</b>	Mitochondrion matrix .
<b>Tissue Specificity</b>	Expressed predominantly in the heart. Detected at lower levels in liver, skeletal muscle and pancreas.
<b>Function</b>	catalytic activity:ATP + [pyruvate dehydrogenase (acetyl-transferring)] = ADP + [pyruvate dehydrogenase (acetyl-transferring)] phosphate.,function:Inhibits the mitochondrial pyruvate dehydrogenase complex by phosphorylation of the E1 alpha subunit, thus contributing to the regulation of glucose metabolism.,similarity:Belongs to the PDK/BCKDK protein kinase family.,similarity:Contains 1 histidine kinase domain.,tissue specificity:Expressed predominantly in the heart.,
<b>Background</b>	Pyruvate dehydrogenase (PDH) is a mitochondrial multienzyme complex that catalyzes the oxidative decarboxylation of pyruvate and is one of the major enzymes responsible for the regulation of homeostasis of carbohydrate fuels in mammals. The enzymatic activity is regulated by a phosphorylation/dephosphorylation cycle. Phosphorylation of PDH by a specific pyruvate dehydrogenase kinase (PDK) results in inactivation. Multiple alternatively spliced transcript variants have been found for this gene. [provided



by RefSeq, Jun 2013],

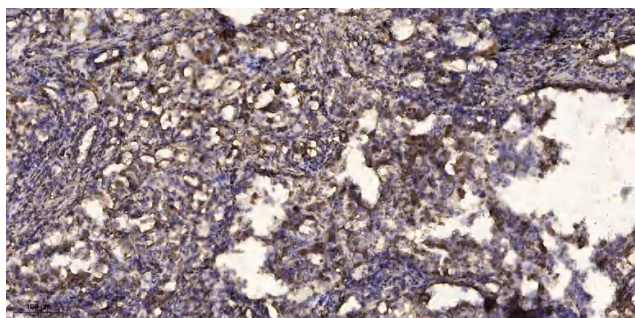
**matters needing attention**

Avoid repeated freezing and thawing!

**Usage suggestions**

This product can be used in immunological reaction related experiments. For more information, please consult technical personnel.

**Products Images**



Immunohistochemical analysis of paraffin-embedded human Squamous cell carcinoma of lung. 1, Antibody was diluted at 1:200(4° overnight). 2, Tris-EDTA,pH9.0 was used for antigen retrieval. 3,Secondary antibody was diluted at 1:200(room temperature, 45min).